


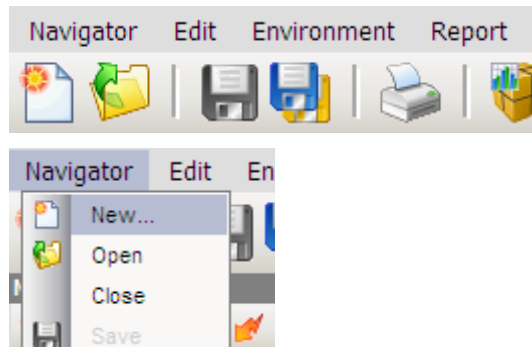
Online Demo Cubeware Cockpit V6pro



10 clicks to create your first report

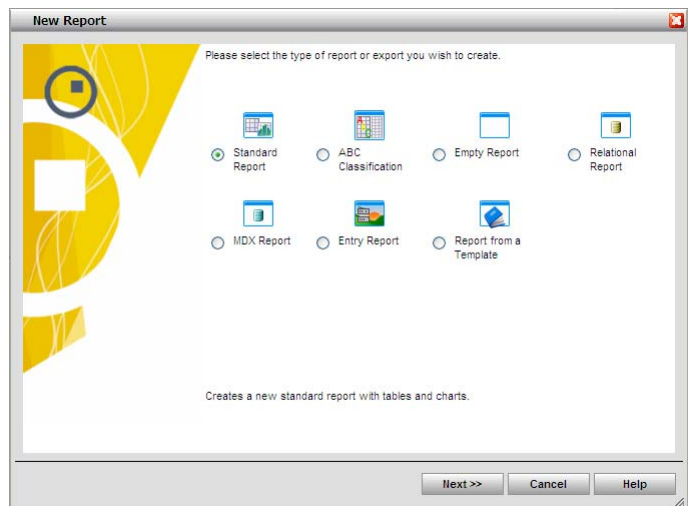
Choose **New** from the **Navigator** menu or click on the corresponding button in the

toolbar. 



You can choose between different report types in the dialog box that then opens. Different wizards will then guide you through the process depending on the type you select.

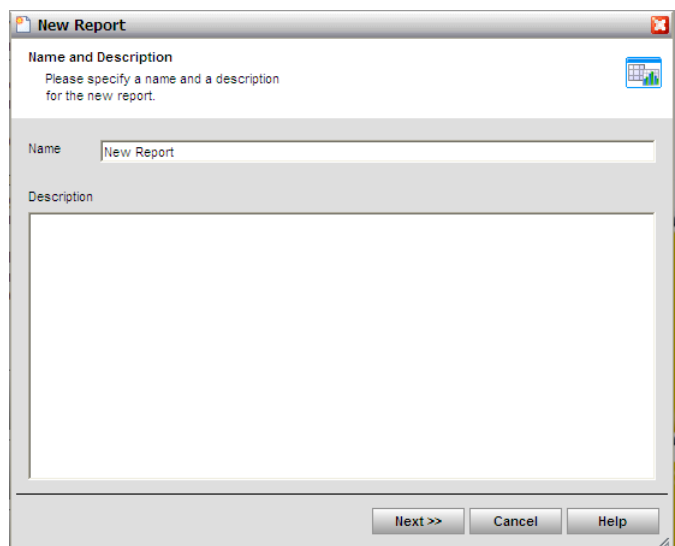
Choose the option "**Standard Report**".



Name and Description

The first page allows you to specify a name and description.

Click **Next** when have completed your entries.



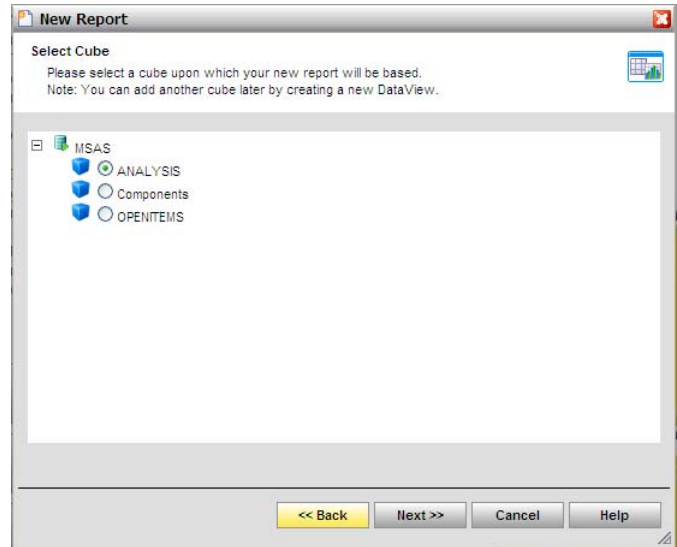


Selecting the cube

The next page allows you to select from any of the cubes available in the database connection MSAS.

Select the "**ANALYSIS**" cube.

Click **Next** when you have selected the cube.

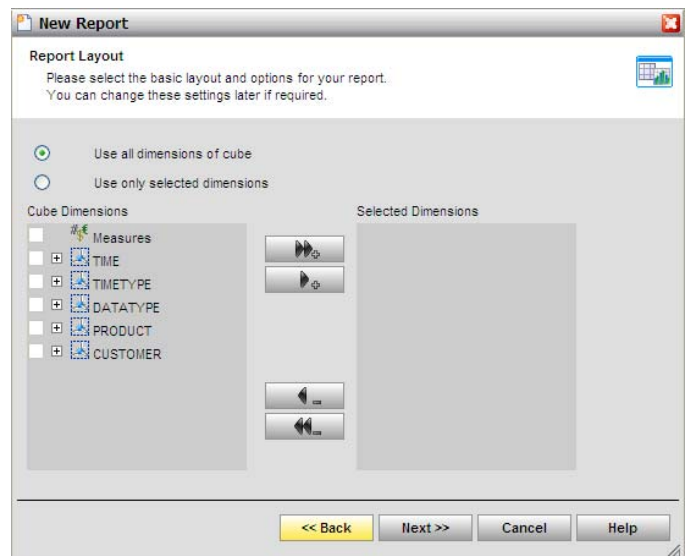


Selecting the dimensions

This page is used to specify the dimensions that are to be used in the report.

Choose the option "**Use all dimensions of cube**".

Click **Next** to proceed.

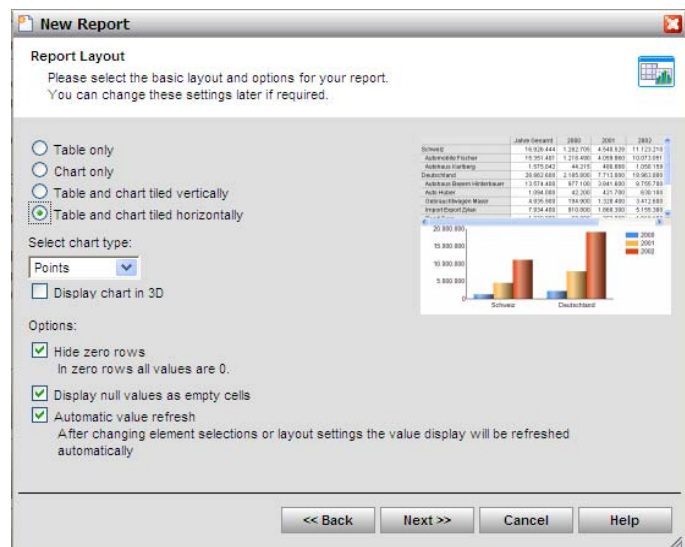


Choosing the report layout

This page allows you to select from four different basic layouts. You can easily change these settings later on if necessary.

Choose the option "**Table and chart tiled horizontally**".

Click **Next** to proceed.



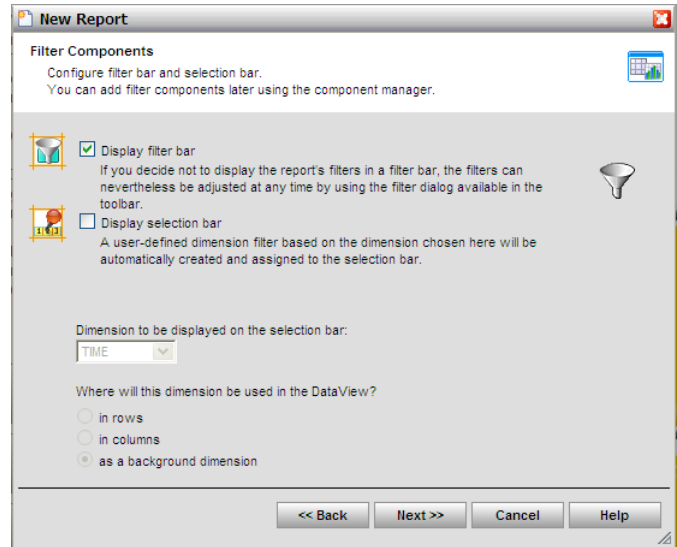


Preconfiguring the filter settings

Filter bars and selection bars are used to control the data query and hence the data that is displayed, for instance allowing you to switch from one year to another.

By default, one filter bar is used.

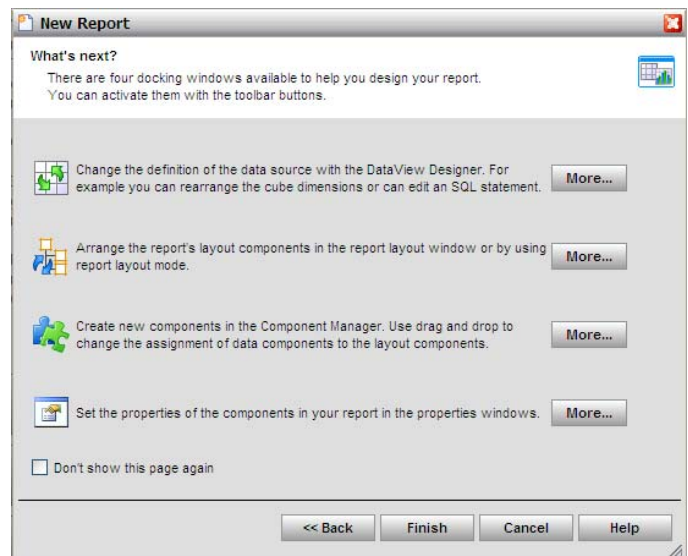
Click **Next** when you are finished.



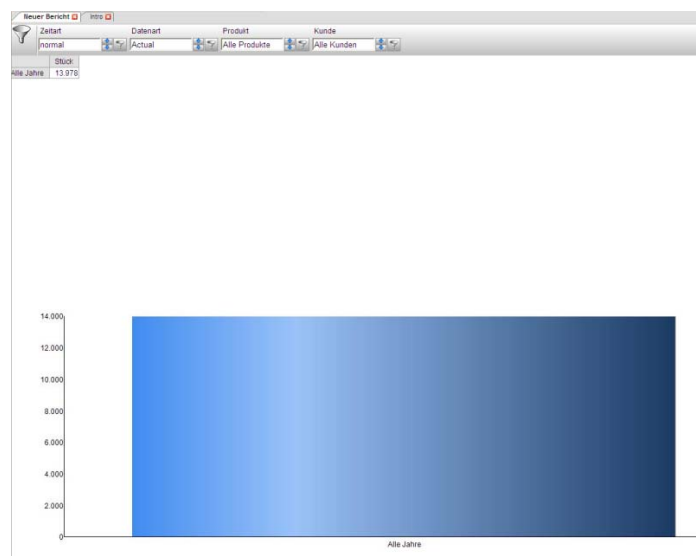
What's next?

The last page of the wizard provides information about the various management windows that help you to create the report.

The report is created when you click **Finish**.



Interim result:





Drill-down and roll-up

Cockpit V6pro provides native navigation in OLAP dimensions without the need for any additional settings.

	Units
All Years	13.978

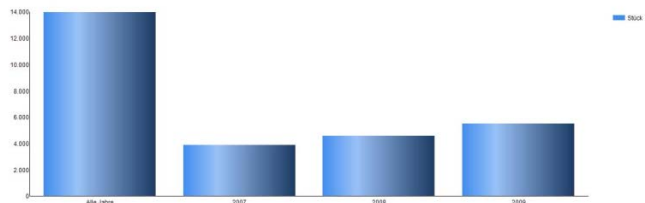
Double-clicking the dimension member "All Years" in the first row of the table expands the child elements of "All Years". If you double-click on the element again, the lower order elements are collapsed again.

	Units
All Years	13.978
2007	3.884
2008	4.573
2009	5.521

If you then double-click on 2009, the child quarters are displayed.

	Units
All Years	13.978
2007	3.884
2008	4.573
2009	5.521
Q1 2009	1.215
Q2 2009	1.488
Q3 2009	1.375
Q4 2009	1.443

The chart changes accordingly, because it shares the data query (DataView) with the table. By default, the table and the chart are associated with the DataView.

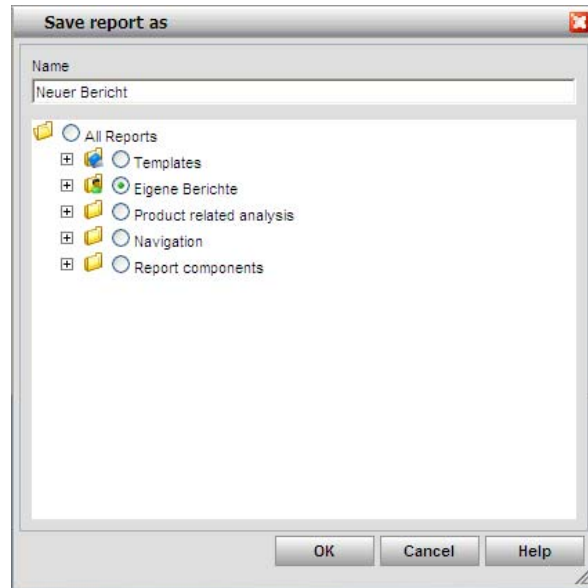




Saving the report

Click the Save button  on the toolbar.

Enter a name for the new report and save it in the folder **My Reports**.



You have completed your first report.

Now please refer to the detailed tutorial document (section 2.3 onwards), where you can learn how to add further capabilities to the report with just a few clicks, for example by nesting dimensions and moving the background dimensions into the columns and rows of the report.



About this document

We reserve the right to change any information contained in this document. Cubeware GmbH does not make any guarantees in this respect. The software described in this document is supplied under the terms of a license agreement and may only be used and copied in accordance with the provisions of the license agreement.

Cubeware GmbH has taken every care to publish accurate information in this document and program and other enclosed information media, and accepts no guarantee and no legal responsibility or other liability for the use of this information. Cubeware GmbH cannot be held liable for any loss or damage that is attributable to a program error or similar, nor for violation of any patent rights or other rights of third parties resulting therefrom.

Copyright

Copyright © 1997-2009 Cubeware GmbH. All rights reserved.

No part of this document may be duplicated, transmitted, stored in a data retrieval system or translated into any other language in whatsoever manner without the prior consent of Cubeware GmbH. This documentation is protected by the Copyright laws and the international Copyright provisions and also by legislation and provisions for the protection of intellectual property.

Protected rights

Cubeware® is a registered trademark. Microsoft Windows is a registered trademark of Microsoft Corporation. SAP®, SAP R/3®, SAP Business Information Warehouse® and SAP NetWeaver® are registered trademarks of SAP AG, Walldorf. All other trademarks mentioned in this documentation are trademarks of the relevant owners.

Limitation of liability

The information contained in this document is subject to change without prior notice and does not constitute any obligation. Up to the maximum limit allowed by law, Cubeware or its suppliers cannot be held liable for special, incidental, indirect or consequential damage (including loss of business profits, disruption of ongoing business operations, loss of business information or any other monetary loss without any restrictions). In particular, Cubeware GmbH cannot accept any liability relating to incorrect or improper use of the documentation or where no precautions against possible damage have been taken.